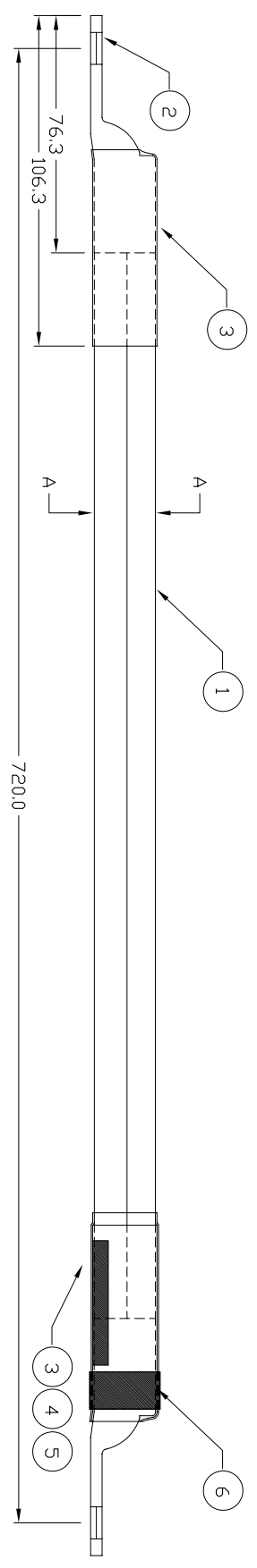


PROPRIETARY
 THIS DRAWING CONTAINS CONFIDENTIAL INFORMATION
 PROPRIETARY TO GMW, INC. IT MUST NOT BE
 REPRODUCED OR DISCLOSED TO OTHERS OR USED IN ANY
 OTHER MANNER, IN WHOLE OR IN PART EXCEPT AS AUTHORIZED
 IN WRITING BY GMW, INC.

REVISIONS			
REV	DESCRIPTION	DRAFT	APPROVED
A	RELEASE		
B	LENGTH CHANGE TO 720mm	MED	MED

SECTION A-A



ITEM	QTY	PART NUMBER	DESCRIPTION	NOTE
6	1		SHRINK TUBING, 1", RED, CUT 12mm	
5	1		PART NUMBER LABEL	
4	1	1 FIT221-1	SHRINK TUBING, 1", CLEAR, CUT 80mm	
3	2	2 FIT321-1	SHRINK TUBING, 1", ADHESIVE, CUT 76mm	
2	1	12900250	COPPER LUG, MODIFIED	
1	3	CW3563-14	EXTRA FLEX WIRE, 2GA, CUT 600mm	

DRAWN		DATE		DO NOT SCALE		PARTS LIST	
MM	ED	4 Nov 03		FROM DRAWING			
CHECK	ED	4 NOV 03		DIMENSIONS & TOLERANCES			
ENGINEERING	ED	4 Nov 03		(UNLESS OTHERWISE SPECIFIED)			
				LINEAR	INCHES	mm	TITLE
				X.XXX	±.009	±0.03	PRIMARY CURRENT
				X.XX	±.01	±0.1	CABLE - 866/867
				X.X	±.03	±0.3	
				X	±1	±1	
				DEG.	/±5	±0.5	
				FINISH	63	1.6	
				THIRD ANGLE PROJECTION			
NEXT ASSY	SYSTEM						SIZE
SOFTWARE							DRAWING NO.
AUTOCAD 2000							A2 16900450
							SCALE
							NTS
							WT kg
							SHEET 1 OF 1

A

3

2

1

1

A