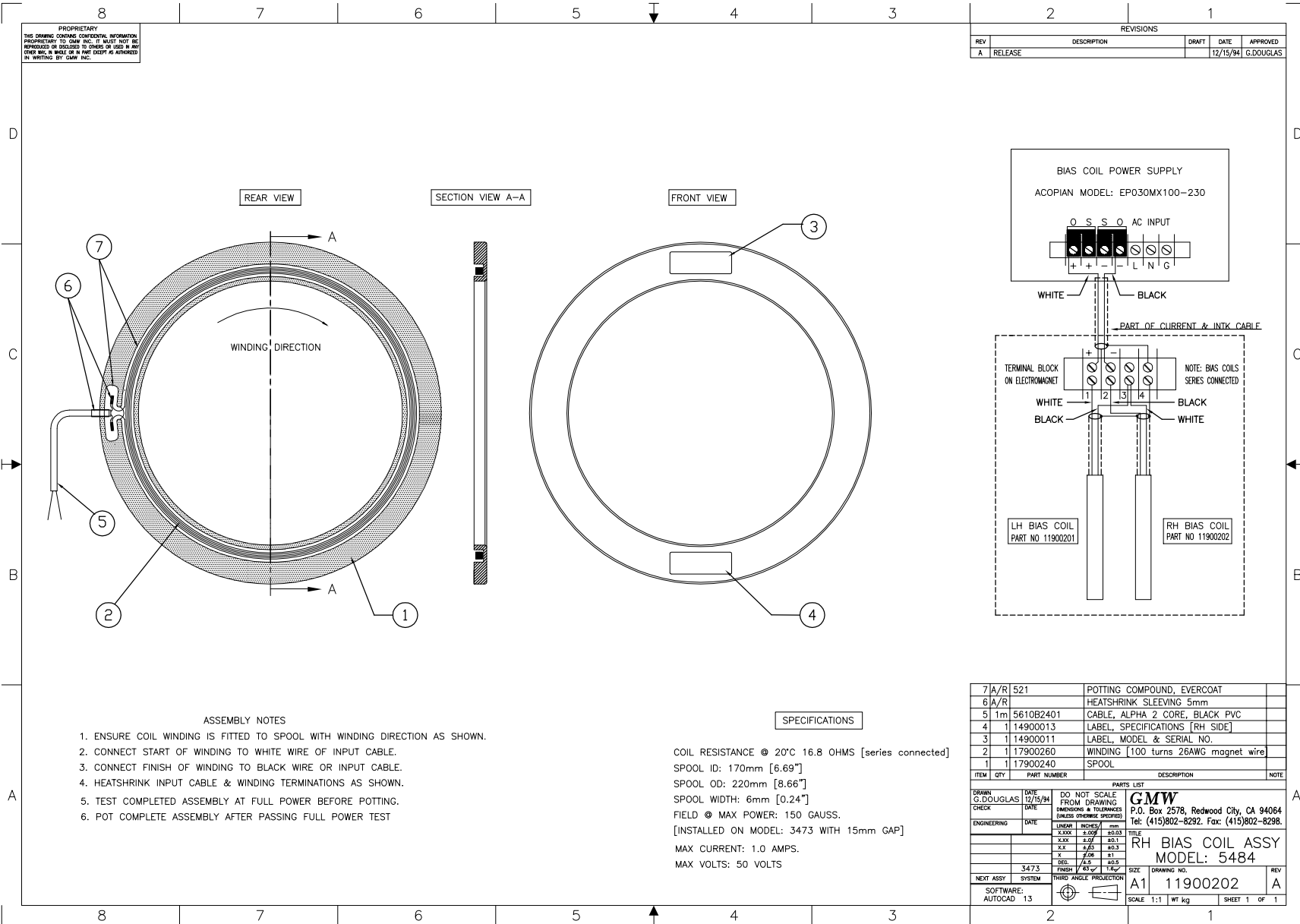


PROPRIETARY  
 THIS DRAWING CONTAINS CONFIDENTIAL INFORMATION  
 PROPRIETARY TO GDM INC. IT MUST NOT BE  
 REPRODUCED OR DISCLOSED TO OTHERS OR USED IN ANY  
 MANNER WHICH WOULD BE IN ANY WAY DETRIMENTAL TO  
 THE INTERESTS OF GDM INC.

REVISIONS				
REV	DESCRIPTION	DRAFT	DATE	APPROVED
A	RELEASE		12/15/94	G.DOUGLAS

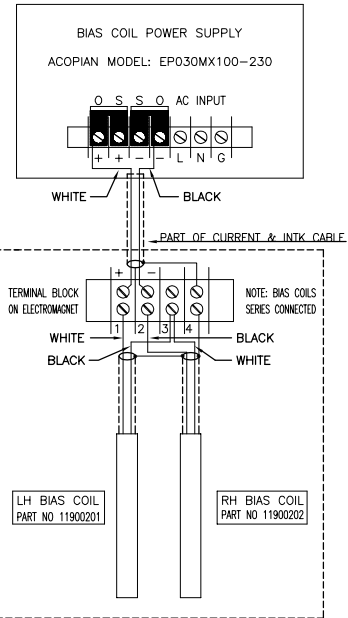


ASSEMBLY NOTES

1. ENSURE COIL WINDING IS FITTED TO SPOOL WITH WINDING DIRECTION AS SHOWN.
2. CONNECT START OF WINDING TO WHITE WIRE OF INPUT CABLE.
3. CONNECT FINISH OF WINDING TO BLACK WIRE OR INPUT CABLE.
4. HEATSHRINK INPUT CABLE & WINDING TERMINATIONS AS SHOWN.
5. TEST COMPLETED ASSEMBLY AT FULL POWER BEFORE POTTING.
6. POT COMPLETE ASSEMBLY AFTER PASSING FULL POWER TEST

SPECIFICATIONS

COIL RESISTANCE @ 20°C 16.8 OHMS [series connected]  
 SPOOL ID: 170mm [6.69"]  
 SPOOL OD: 220mm [8.66"]  
 SPOOL WIDTH: 6mm [0.24"]  
 FIELD @ MAX POWER: 150 GAUSS.  
 [INSTALLED ON MODEL: 3473 WITH 15mm GAP]  
 MAX CURRENT: 1.0 AMPS.  
 MAX VOLTS: 50 VOLTS



ITEM	QTY	PART NUMBER	DESCRIPTION	NOTE
7 A/R	521		POTTING COMPOUND, EVERCOAT	
6 A/R			HEATSHRINK SLEEVING 5mm	
5	1m	5610B2401	CABLE, ALPHA 2 CORE, BLACK PVC	
4	1	14900013	LABEL, SPECIFICATIONS [RH SIDE]	
3	1	14900011	LABEL, MODEL & SERIAL NO.	
2	1	17900260	WINDING [100 turns 26AWG magnet wire]	
1	1	17900240	SPOOL	

DRAWN		DATE	DO NOT SCALE	PARTS LIST	
G.DOUGLAS	12/15/94		FROM DRAWING	TITLE	
CHECK			DIMENSIONS & TOLERANCES	RW BIAS COIL ASSY	
ENGINEERING	DATE		(UNLESS OTHERWISE SPECIFIED)	MODEL: 5484	
			LINEAR INCHES/mm	SIZE	DRAWING NO.
			XXX ±.01 ±.015	A1	11900202
			XX ±.02 ±.03	SCALE	1:1
			X ±.04 ±.05	WT	kg
			DEC ±.05 ±.05	SHEET	1 OF 1
			FINISH ±.07 ±.07		
NEXT ASSY	SYSTEM	THIRD ANGLE PROJECTION			
SOFTWARE:	AUTOCAD 13				