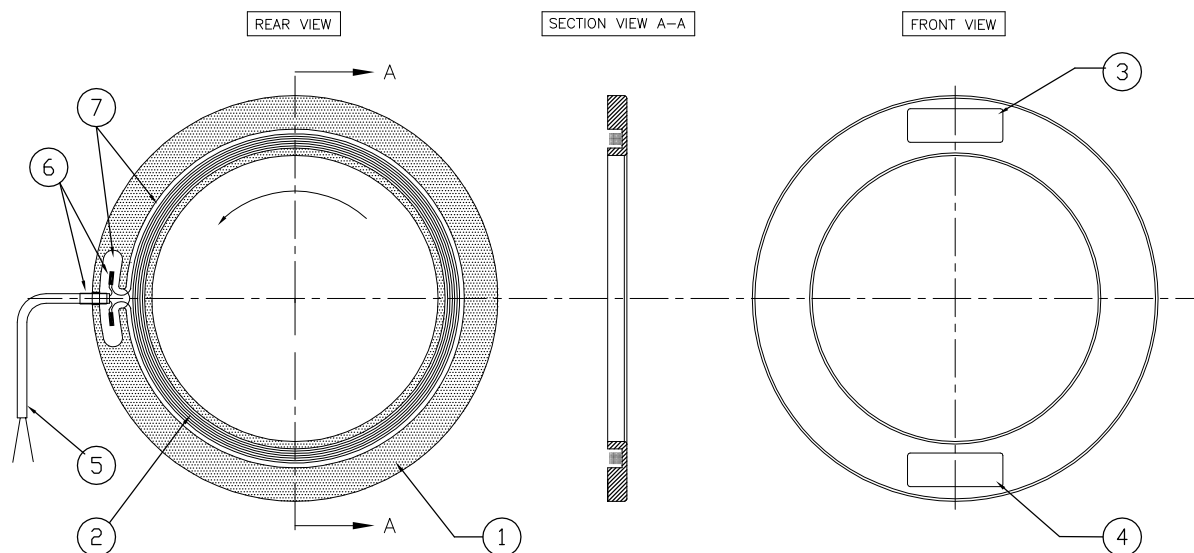


PROPRIETARY
THIS DRAWING CONTAINS CONFIDENTIAL INFORMATION
PROPRIETARY TO GMW INC. IT MUST NOT BE
REPRODUCED OR DISCLOSED TO OTHERS OR USED IN ANY
OTHER WAY, IN WHOLE OR IN PART EXCEPT AS AUTHORIZED
IN WRITING BY GMW INC.

REVISIONS				
REV	DESCRIPTION	DRAFT	DATE	APPROVED
A	RELEASE		12/13/94	G.DOUGLAS

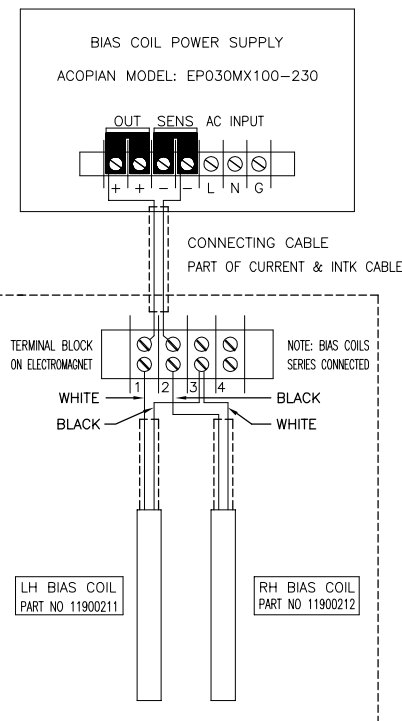


ASSEMBLY NOTES


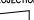
1. ENSURE COIL WINDING IS FITTED TO SPOOL WITH WINDING DIRECTION AS SHOWN.
2. CONNECT START OF WINDING TO WHITE WIRE OF INPUT CABLE.
3. CONNECT FINISH OF WINDING TO BLACK WIRE OF INPUT CABLE.
4. HEATSHRINK INPUT CABLE & WINDING TERMINATIONS AS SHOWN.
5. TEST COMPLETED ASSEMBLY AT FULL POWER BEFORE POTTING.
6. POT COMPLETE ASSEMBLY AFTER PASSING FULL POWER TEST

SPECIFICATIONS

COIL RESISTANCE @ 20°C 12.4 OHMS [series connected]
SPOOL ID: 120mm [4.72"]
SPOOL OD: 170mm [6.72"]
SPOOL WIDTH: 6mm [0.24"]
FIELD @ MAX POWER: 150 GAUSS.
MAX CURRENT: 1.0 AMPS.
MAX VOLTS: 50 VOLTS



7 A/R		POTTING COMPOUND	
6 A/R		HEATSHRINK SLEEVING 5mm	
5 1m	5610B2401	CABLE, ALPHA 2 CORE, BLACK PVC	
4	1 14900012	LABEL, SPECIFICATIONS [LH SIDE]	
3	1 14900011	LABEL, MODEL & SERIAL NO.	
2	1 17900270	WINDING [100 turns 26AWG magnet wire]	
ITEM	QTY	DESCRIPTION	NOTE
1	17900270	SPOOL	

DRAWN		DATE		DO NOT SCALE		PARTS LIST	
G.DOUGLAS		12/13/94		FROM DRAWING		GMW	
CHECK		DATE		DIMENSIONS & TOLERANCES (UNLESS OTHERWISE SPECIFIED)		P.O. Box 2578, Redwood City, CA 94064	
ENGINEERING		DATE		LINEAR INCHES/mm		Tel: (415)802-8292. Fax: (415)802-8298.	
				X.XXX ±0.009 ±0.03		TITLE	
				X.XX ±0.01 ±0.1		LH BIAS COIL ASSY	
				X.XX ±0.3 ±0.3		MODEL: 5483	
				X ±0.6 ±0.1		SIZE	
				DEL. / 1.5 ±0.1		DRAWING NO.	
				FINISH 1.1 ±0.1 1.6		A1 11900211	
NEXT ASY		3472		THIRD ANGLE PROJECTION		REV	
						SCALE	
SOFTWARE:						1:1 WT kg	
AUTOCAD 12						SHEET 1 OF 1	