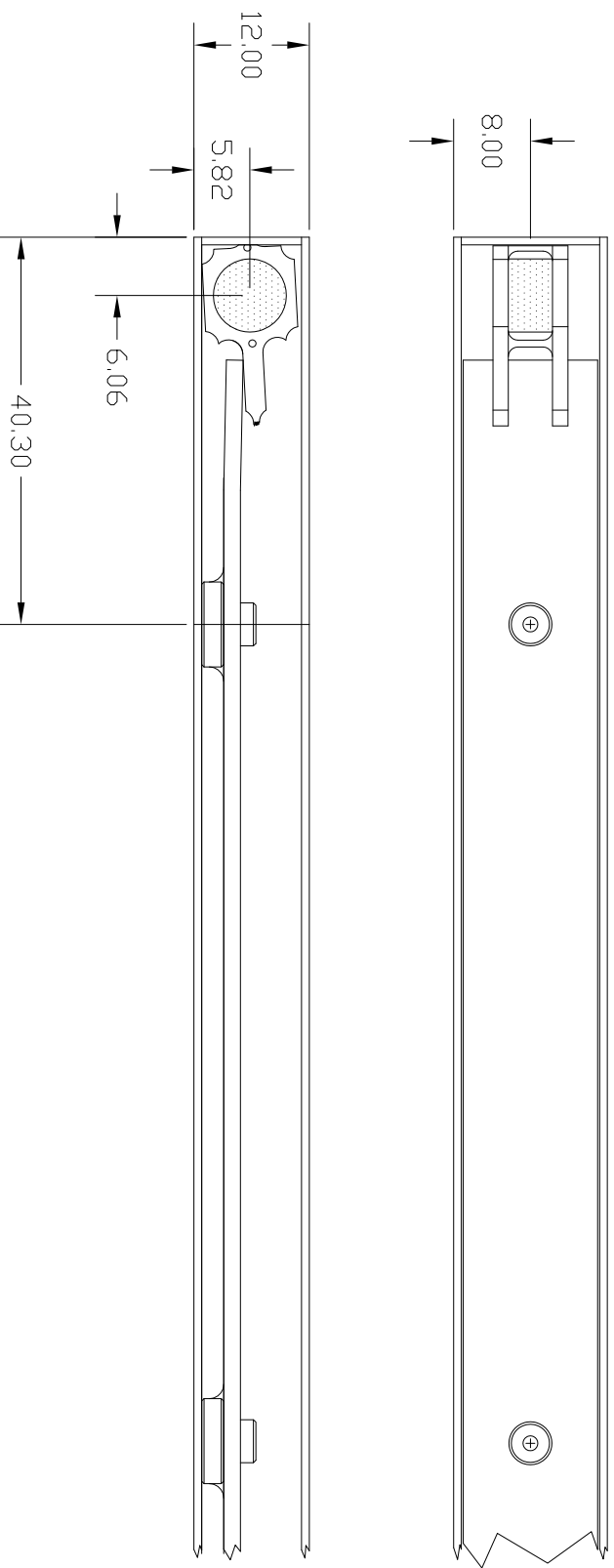


PROPRIETARY
 THIS DRAWING CONTAINS CONFIDENTIAL INFORMATION
 PROPRIETARY TO GMW, INC. IT MUST NOT BE
 REPRODUCED OR DISCLOSED TO OTHERS OR USED IN ANY
 OTHER WAY, IN WHOLE OR IN PART EXCEPT AS AUTHORIZED
 IN WRITING BY GMW, INC.

REVISIONS				
REV	DESCRIPTION	DRAFT	DATE	APPROVED
A	RELEASE		08/31/97	M. DUFFY



- Note:
1. Shown with probe range 1 sample dimensions.
 2. All sample center dimensions are to copper tube and do not include the outer shrink tubing thickness.

ITEM	QTY	PART NUMBER	DESCRIPTION	NOTE
PARTS LIST				
DRAWN M. DUFFY DATE 08/21/97				
CHECK M. DUFFY DATE 08/31/97				
ENGINEERING M. DUFFY DATE 08/31/97				
DO NOT SCALE FROM DRAWING DIMENSIONS & TOLERANCES (UNLESS OTHERWISE SPECIFIED)				
LINEAR		INCHES/		mm
X.XXX	±.005	±0.1	±0.13	
X.XX	±0.1	±0.3	±0.3	
X.X	±0.3	±1	±0.5	
X	±0.6	±1	±0.5	
DEC.	±.5	±1	±0.5	
FINISH	63 ✓	1.6 ✓		
THIRD ANGLE PROJECTION				
SOFTWARE: AUTOCAD 13				
SCALE	2:1	WT kg	SHEET 1	OF 1
SIZE	A3	DRAWING NO.	18900480	REV A
TITLE: 1060/1062 PROBE SAMPLE LOCATION				
GMW P.O. Box 2578, Redwood City, CA 94064 Tel: (650)802-8292. Fax: (650)802-8298.				