

Typical Field Map for Metrolab Model PM-1005-0275 Permanent Magnet

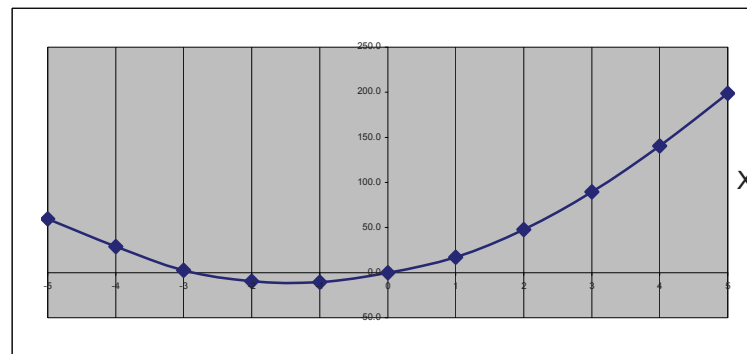
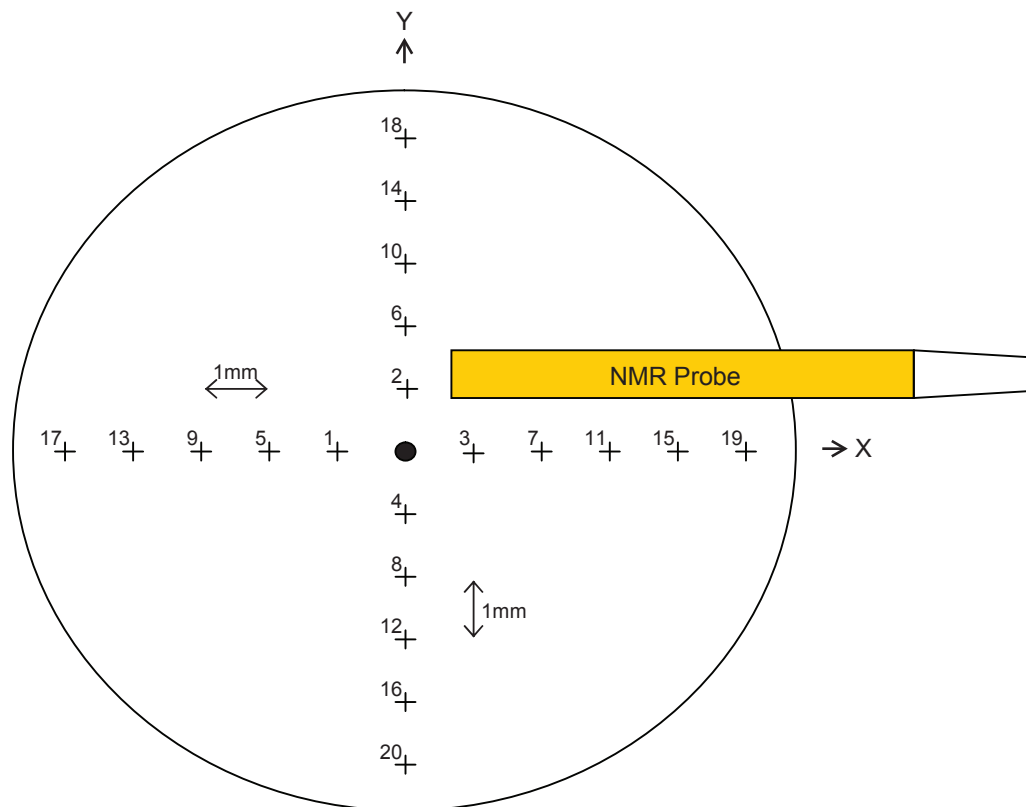
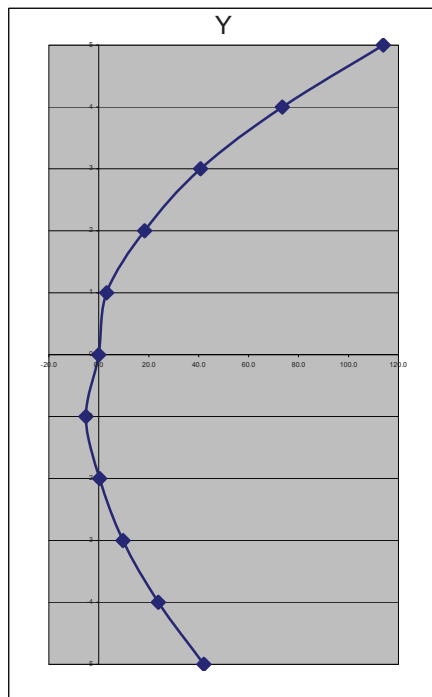


Model PM-1005-0275

S/N 008

B nom [T] 0.2896108

Point	B [T]	B [ppm]
0	0.2896108	0.0
1	0.2896077	-10.7
2	0.2896117	3.1
3	0.2896157	16.9
4	0.2896093	-5.2
5	0.2896080	-9.7
6	0.2896161	18.3
7	0.2896246	47.7
8	0.2896109	0.3
9	0.2896115	2.4
10	0.2896226	40.7
11	0.2896367	89.4
12	0.2896136	9.7
13	0.2896192	29.0
14	0.2896321	73.5
15	0.2896515	140.5
16	0.2896177	23.8
17	0.2896280	59.4
18	0.2896438	113.9
19	0.2896684	198.9
20	0.2896230	42.1



Distributed By:

GMW Associates

995 Industrial Road, San Carlos, CA, 94070 USA
 PHONE: +1 650-802-8292 FAX: +1 650-802-8298
 EMAIL: sales@gmw.com WEB: www.gmw.com