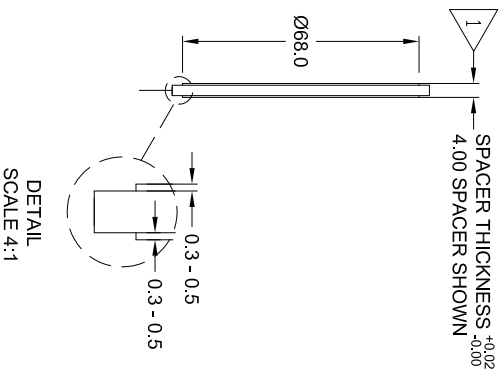
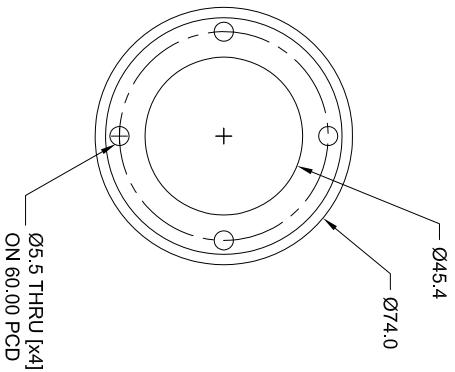
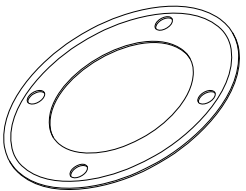


PROPRIETARY  
 THIS DRAWING CONTAINS CONFIDENTIAL INFORMATION  
 PROPRIETARY TO GDM INC. IT MUST NOT BE  
 REPRODUCED OR DISCLOSED TO OTHERS OR USED IN ANY  
 OTHER WAY, IN WHOLE OR IN PART EXCEPT AS AUTHORIZED  
 IN WRITING BY GDM INC.



POLE GAP SPACERS		
PART NUMBER	SPACER THICKNESS	POLE GAP
17907-0309-0.0	3.00mm	0.0mm
17907-0309-0.5	3.50mm	1.0mm
17907-0309-0.7	3.75mm	1.5mm
17907-0309-1.0	4.00mm	2.0mm
17907-0309-1.2	4.25mm	2.5mm
17907-0309-1.5	4.50mm	3.0mm
17907-0309-1.7	4.75mm	3.5mm
17907-0309-2.0	5.00mm	4.0mm
17907-0309-2.2	5.25mm	4.5mm
17907-0309-2.5	5.50mm	5.0mm

SUFFIX OF SPACER PART NUMBER DENOTES THICKNESS ABOVE BASE THICKNESS. BASE THICKNESS IS 3.00mm.  
 IF TWO SPACERS 17907-309-1.0 ARE USED, THE GAP IS 2.0mm ON THE MEDIAN PLANE. OFFSET GAP IS POSSIBLE USING MIXTURE OF POLE SPACERS ABOVE.

MATERIAL: 1006 or 1018 STEEL PLATE  
 FINISH: EN PLATE 0.01 THICK  
 QUANTITY: 2 PER MAGNET

- NOTE:  
 1. FINISHED DIMENSIONS AFTER PLATING.  
 2. BREAK ALL SHARP EDGES 0.2mm.

REVISIONS			
REV	DESCRIPTION	DRAWN	APPROVED
A	RELEASE		G.DOUGLAS

ITEM	QTY	PART NUMBER	DESCRIPTION	NOTE
PARTS LIST				
DRWING		DATE	DO NOT SCALE FROM DRAWING DIMENSIONS & TOLERANCES (UNLESS OTHERWISE SPECIFIED)	
G.DOUGLAS		10/28/10		
CHECK		DATE		
ENGINEERING		DATE		
LINEAR		INCHES	mm	TITLE
X.XXX	±.009	±0.03		MODEL: 5404 5T MAGNET
X.XX	±.07	±0.1		POLE GAP SPACER
X.X	±.03	±0.3		
X	.06	±1		
DEC.	/±5	±0.5		
FINISH		63	1.6	SIZE
THIRD ANGLE PROJECTION				A2
NEXT ASSY	SYSTEM			DRAWING NO.
SOFTWARE				17907-0309-0
AUTOCAD	2000			SCALE
				1:1
				WT Kg
				SHEET 1 OF 1

**GDM**  
 955 Industrial Rd, San Carlos, CA 94070  
 Tel: (650)802-8292. Fax: (650)802-8298.