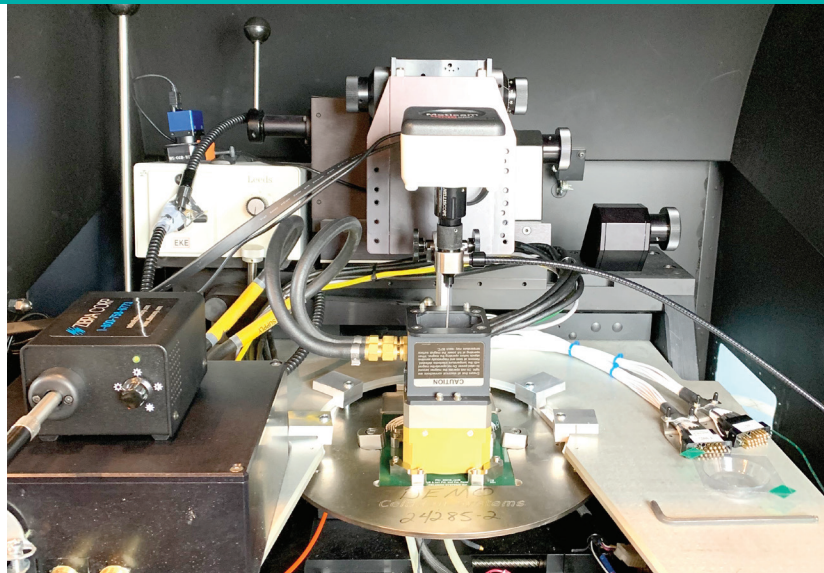
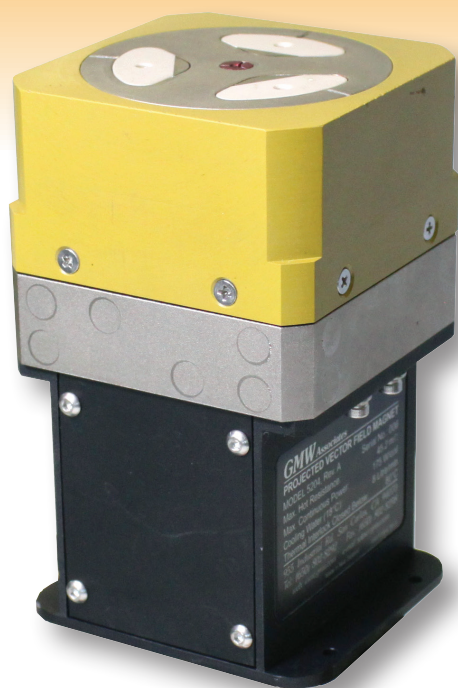
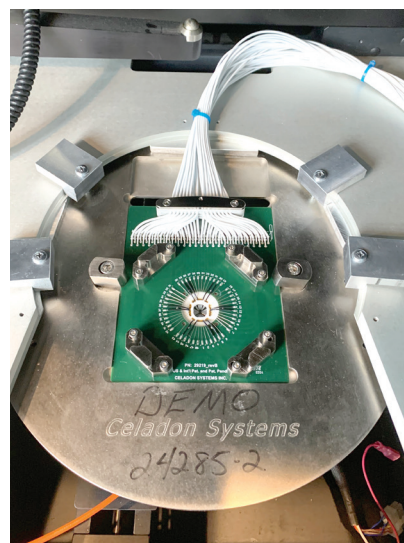
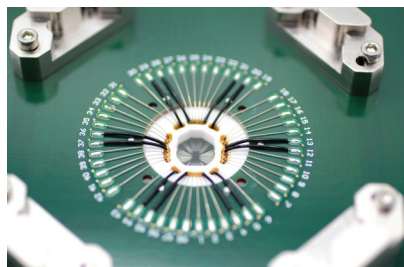
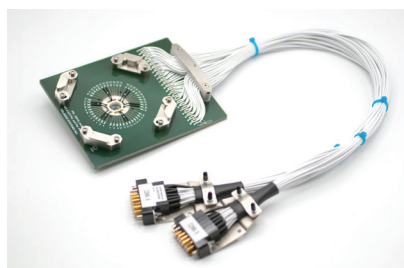


GMW ASSOCIATES 5204 MAGNET CELADON INTEGRATED TOC AND TOP DOWN BORESCOPE ALIGNMENT SYSTEM

GMW Associates and Celadon Systems have partnered to develop an integrated electro-magnet and probe card solution. The 5204 magnet interfaces with the Celadon 4.5inch Tile-on-Card Probe Card and top down Integrated Borescope alignment system. Using this configuration device testing of a single DUT with both in-plane and perpendicular field over 2mm disc with no relocation of sample. Magnetic fields **(including in-plane rotating field)** in any direction to 120mT are possible. Celadon can produce cable-out solutions for any probe station and working with GMW Associates, optimized magnetic fields can be introduced to the DUT.



GMW ASSOCIATES AND CELADON SYSTEMS
INTEGRATED MAGNETIC SOLUTION



GMW 5204 MAGNET WITH
CELADON 4.5inch TILE-ON-CARD
AND INTEGRATED TOP-DOWN
BORESCOPE ALIGNING SYSTEM

PEAK FIELD, CONTINUOUS
(62A): >60mT (IN-PLANE); 100mT (OUT OF PLANE)

PEAK FIELD, TRIANGLE
(100A): > 100mT (IN-PLANE), 150mT (OUT OF PLANE)

PROBE CARD TEMPERATURE RANGE: -65C to 200C
PROBE CARD CHANNEL-TO-CHANNEL LEAKAGE
 $\leq 50\text{fA/V @ 10 Seconds and } 25^{\circ}\text{C}$

220427r1