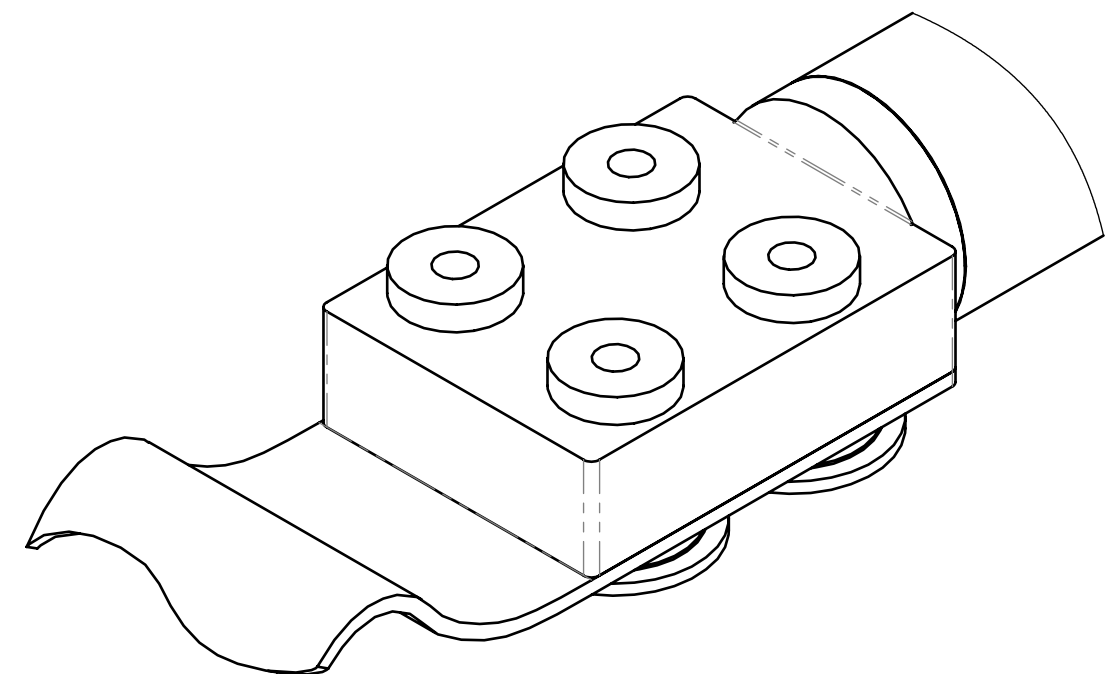
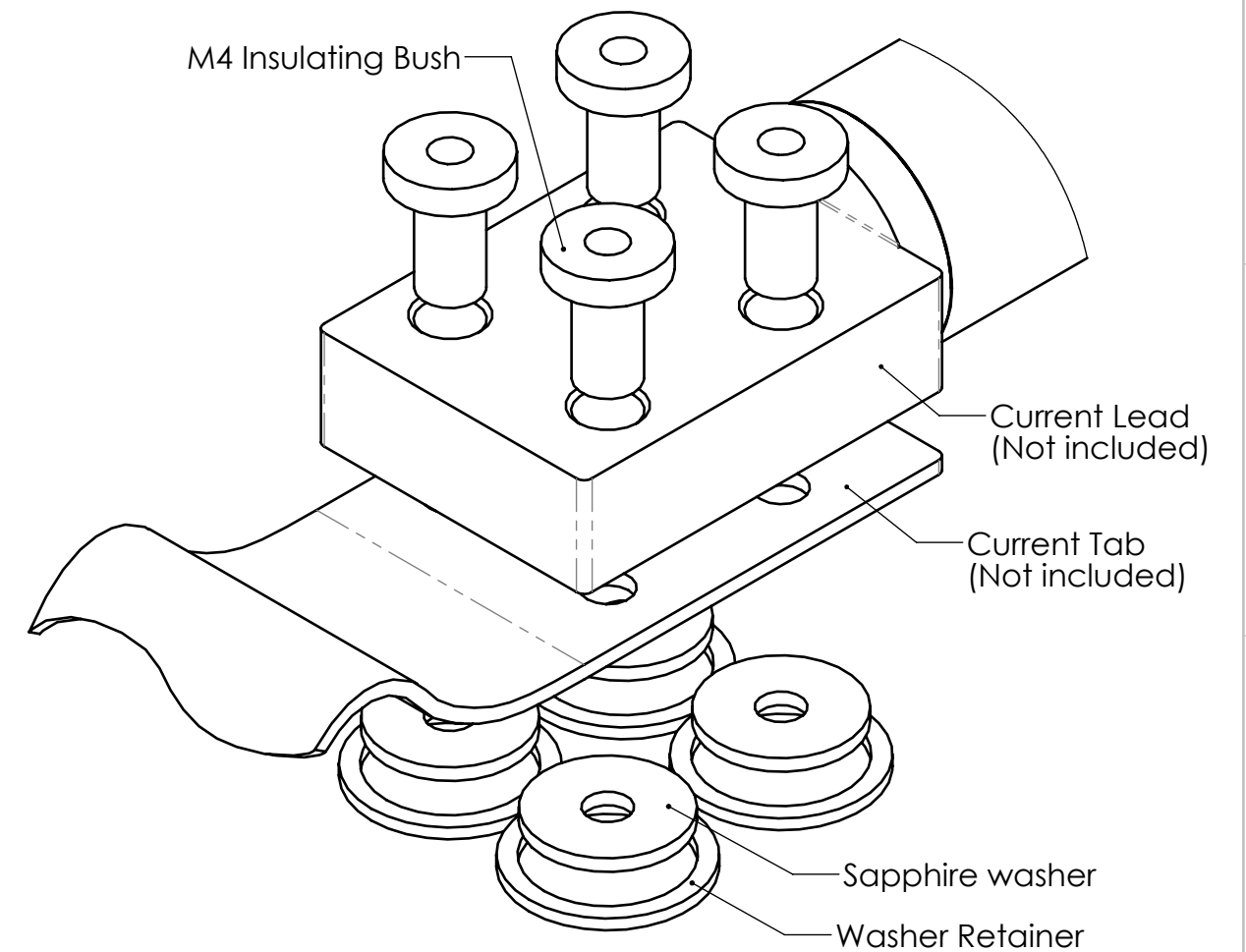
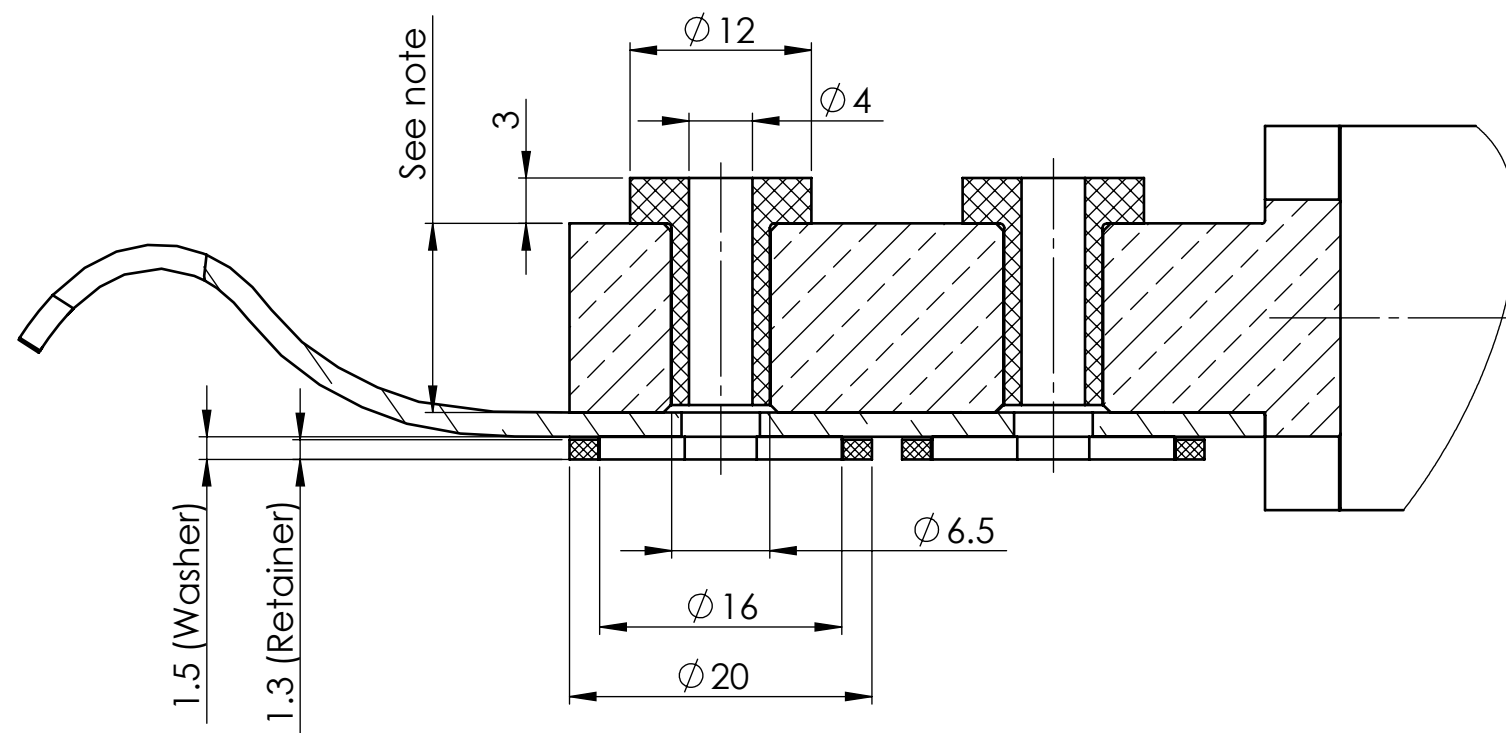


Configuration for 1000A and 2000A Standard Current Leads. - Use 1 kit for 1 pair of leads -



Each Sapphire Kit (PN# SK-1000A to SK-2000A) contains:

- 16 x Sapphire washer
- 16 x Washer Retainer
- 16 x M4 Insulating Bush
- 1 x Sapphire Kit Outline Drawing

Note:
1000A - 2000A end thickness varies from 9.53 - 12.7mm. See individual current lead outline drawings for specific thickness.

ALL DIMENSIONS ARE IN MILLIMETRES



www.hts-110.com

DO NOT SCALE DRAWING

CONFIDENTIAL / copyright HTS-110

PRODUCT NO.

SK-1000A-2000A

DWG NO.

L99000102

A3